

WX4

tyco
Gas & Flame
Detection



WX4

- 4-Channel Controller
- 4-20mA or Bridge Sensor Inputs
- Programmable Relays
- RS-232/485 ModBus
- Wireless Options
- Graphical Display



CERTIFICATIONS



Detection, Protection, Innovation

Oldham SAS has more than 100 years of experience in safety, gas and fire detection systems. Oldham SAS is headquartered in Arras, France, and is a subsidiary of Tyco Gas and Flame Detection. Oldham employs hundreds of people globally with operations in France, USA, China, India and Germany. Oldham's mission is to be the best provider of fixed-point gas detection systems worldwide. Its wide range of application-driven products and expertise embody performance, quality and reliability.

Safer. Smarter. Tyco.™

RELIABLE

The WX4 controller is designed to offer reliability and functionality.

- Security mode allows for lockout of critical parameters
- NEMA 4X/7 Enclosures
- Non-volatile memory retains all configuration data
- CSA Div 2 A,B,C,D and C22.2 No. 152 approved

VERSATILE

The WX4 controller can be configured in multiple ways to meet your application needs. It offers analog, digital, and wireless capability and comes standard with two programmable alarm relays.

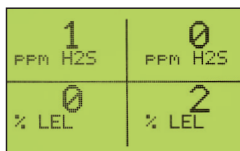
- Accepts four 4-20mA, bridge, or wireless inputs
- Provides 4-20mA, ModBus RTU, or wireless outputs
- Wireless Communication (opt)
- Magnetic and Tripod mounting options available
- Multiple enclosure options
- Multiple power supply options including solar
- Two programmable SPDT alarm relays and a common horn driver standard
- Six programmable alarm relays (opt)

EASY TO USE

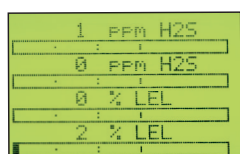
The WX4 is designed to offer the user convenient features and ease of use.

- Touch Key and Non-Intrusive (magnetic) Operation
- Graphic Display
- Visual Alarm LEDs
- Built-In Piezo Siren

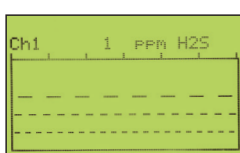
Display Screens



Main Screen



Bar Graph Screen



Trend Screen

APPLICATIONS

- Oil and Gas Industry
- Offshore Drilling
- Utilities and Power
- Petrochemical Industry
- Municipal Water and Waste Treatment
- Food and Beverage Production



WIRELESS

Wireless communication is becoming increasingly popular in gas detection, and it is sometimes the only way to ensure safety in existing infrastructure or remote locations.

The WX4 can be configured to accept wireless inputs from an OLCT 200 transmitter or communicate wirelessly to a compatible ModBus master device. Additionally, the WX4's wireless option offers the following features:

- 900MHz or 2.4GHz FHSS
- 10mW – 1W Adjustable Tx Power
- CSA Div 1 and DIV 2 Antennas
- 256-bit Encryption
- Indoor Range up to 3000' (900 meters)
- Outdoor Range up to 10 miles (16 km)
- -100dBm Receiver Sensitivity
- Battery & Solar Powered Options

OLDHAM also offers a variety of wireless solutions compatible with the WX4, including wireless transmitters, controllers, and solar-powered field monitors as well as wireless repeaters and accessories.



OLCT 200



WX 16



WX64

TECHNICAL SPECIFICATIONS

Display	LCD (128 x 64 pixel) with backlighting
Indicators	Six discrete LEDs for three common alarm levels, fault, calibration mode, and keypad function
Interface Buttons	Five buttons - dual touch key and magnetic (non-intrusive)
Inputs	<p>Four channels (either 4x 4-20mA or 4x bridge sensor)</p> <p>4-20mA inputs are into 100 ohm impedance and include +power for each channel for routing power to 2- or 3-wire transmitters</p> <p>Bridge sensor inputs allow for adjustable sensor excitation and balance settings</p> <p>Up to 4 channels can be received wirelessly from an OLCT 200 transmitter configured with a wireless package</p>
Outputs	Opt. 4-channel 4-20mA output (max load 800 ohms @24VDC)
Relays	<p>Std. Two programmable 5amp, 30VDC or 250VAC resistive Form C</p> <p>Opt. Six programmable 5amp, 30VDC or 250VAC resistive Form C</p> <p>All relays are programmable and allow for voting based on the alarm state of each of the four channels</p>
ModBus	RS-232 or RS-485 ModBus RTU master or slave (9600 baud)
Power Supply	<p>Std. 100-240 VAC / 24VAC 10W</p> <p>Opt. 100-240 VAC / 24VAC 50W</p> <p>Opt. 100-240 VAC / 24VAC 120W</p> <p>Opt. Solar / Battery Power (see factory for availability)</p>
Wireless	<p>900MHz or 2.4GHz FHSS (Frequency Hopping Spread Spectrum)</p> <p>256-bit AES Encryption (meets FIPS-197)</p> <p>10mW - 1W adjustable transmit power (900Mhz); 120mW (2.4GHz)</p>
Enclosure	<p>Non-Metallic Wall Mount</p> <p>-NEMA 4X / IP66; for Div.2 Groups A,B,C,D</p> <p>-14.10" (358mm) H x 11.25" (286mm) W x 7.25" (184mm) D</p> <p>Painted Steel Wall Mount</p> <p>-NEMA 4 / IP66; for Div.2 Groups A,B,C,D</p> <p>-13.65" (347mm) H x 9.84" (504mm) W x 6.20" (158mm) D</p> <p>Stainless Steel Wall Mount</p> <p>-NEMA 4X / IP66; for Div.2 Groups A,B,C,D</p> <p>-13.65" (347mm) H x 9.84" (504mm) W x 6.20" (158mm) D</p> <p>Explosion-Proof Aluminum Wall Mount</p> <p>-NEMA 4/7, for Div.1 & Div. 2 Groups B,C,D</p> <p>-14.25" (362mm) H x 13.00" (330mm) W x 6.25" (159mm) D</p>
Operating Temp	-25°C to 60°C
Humidity	0% - 90% Relative Humidity; Non-Condensing
Approvals	<p>CSA C22.2 No 152 for combustibles</p> <p>CSA C22.2 No 1010.1 and ISA S82.02</p> <p>UL 1604 / CSA C22.2 No 213 (Div 2 Groups A,B, C, D)</p> <p>EN55011 and EN61000</p>

WX4- □ □ □ □ □ □ □ □

Enclosure Analog Inputs Analog Outputs Digital Outputs Wireless Power Relays Strobes

EXAMPLE: WX4-11010220

A WX4 controller with non-metallic housing configured with 4-channel 4-20mA inputs, ModBus RTU, a 50W power supply, and eight programmable relays.

ENCLOSURE	INPUTS	OUTPUT	OUTPUT	WIRELESS	POWER	RELAYS	STROBES
1 Non-Metallic, NEMA 4x 2 Painted Steel, NEMA 4 3 Stainless Steel, NEMA 4x 4 Aluminum, NEMA 4X/7, XP	1 4x 4-20mA 2 4x Bridge Sensor	0 None 1 4x 4-20mA	0 None 1 RS-232/485 ModBus RTU	0 None 1 900MHz 2 2.4Ghz ~ Consult factory for antenna options	1 10W, Div 2. 2 50W, Div 2. 3 120W, Div 2. ~ Consult factory for solar options.	1 2x Programmable 2 8x Programmable	0 None 1 Red (Div 2) 2 Amber (Div 2) 3 Blue (Div 2) 4 Green (Div 2) 5 Strobe/Horn Combo (IP66)

ACCESSORIES

- Magnetic Mounting Kit (P/N 10-0319)
- 100db Piezo Alarm (P/N 1000-1892)
- Human Machine Interface (HMI) Software (P/N WX-HMI)
- Solar / Battery Options (Consult factory)
- Wireless Antenna Options (Consult Factory)
- Div 2 Quick Connector and Cable Set Options (Consult Factory)

Our fixed detector Range



OLCT 200



OLCT 10



OLCT 100



OLCT 80



iTrans 2



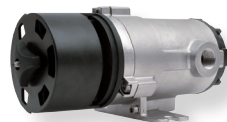
CTX 300



OLCT 60



OLCT 60 / OLCT IR



OLCT IR



Flame Detector

As an ISO 9001 & ISO 14001 approved company, OLDHAM quality assurance programmes demand the continuous assessment and improvement of all OLDHAM products. Information in this leaflet could thus change without notification and does not constitute a product specification. Please contact OLDHAM or their representative if you require more details.

EMEAI
Oldham Headquarter
 21 Est, Rue Orfila,
 CS 20417
 62027 ARRAS CEDEX
 France
 Tel : +33 (0) 3 21 60 80 80
 Fax : +33 (0) 3 21 60 80 00
 info@oldhamgas.com

AMERICAS - Houston (USA)
 4320 Goldmine Road
 Monroe, NC 28110
 USA
 Tel : +1 800 247 7257
 Fax : +1 704 291 8330
 sh-sale@tycoint.com

ASIA PACIFIC - Shanghai (CN)
 Oldham Instrument Shanghai Ltd.
 290 Guiqiao Road
 Pudong, Shanghai 201206
 People's Republic of China
 Tel : +86 21 3127 6373
 Fax : +86 21 3127 6365
 sales@oldhamgas.com